



TSXV : EMH  
OTCQX : EMHTF

Price: \$4.30<sup>1</sup>  
Market Cap: \$582.5 M<sup>1</sup>  
Cash: \$74 M<sup>2</sup>  
O/S Shares: 135.4 M<sup>2</sup>  
3 M Avg Vol: 1.09 M<sup>3</sup>  
52W H/L: \$1.07-\$9.68

<sup>1</sup>18/08/22 <sup>2</sup>18/05/25 <sup>3</sup>TSXV + OTCQX

Strategic investor, Emerald Health Sciences, owns 32%

## RECENT ADVANCES

**18/08/23** JV, Pure Sunfarms receives amendment from Health Canada to expand production area to 420K sf

**18/08/21** JV, Pure Sunfarms appoints Mandesh Dosanjh; former Senior Vice president, Supply Chain and Wholesale, at the Liquor Control Board of Ontario

**18/07/30** JV, Pure Sunfarms receives sales license from Health Canada for 1.1 M sf greenhouse

**18/07/24** Signs MOU with the BCLDB to supply cannabis for adult-use market in BC

**18/07/19** Completes full acquisition of Northern Vine Laboratories, a Licensed Dealer, expanding analytical testing and import/export opportunities

## EMERALD HEALTH THERAPEUTICS INC.

Leveraging industry-leading life sciences, cannabis and greenhouse growing expertise to achieve highly competitive low cost, value added products for the large legal medical and future recreational cannabis market in Canada.

### COMPANY HIGHLIGHTS

- One of the industry's most qualified management teams in life sciences, cannabis cultivation & large scale agri-business. Management & board members have raised over \$1B for development-stage companies and run clinical trials with aggregate budgets exceeding \$1B.
- Downstream focus on high margin products. Pursuing product innovation and intellectual property based on unique genetics/strains, formulation, delivery, and other attributes. Future initiatives include generating clinical evidence of utility with unique formulated products.
- Transformational 50/50 partnership with Village Farms, one of North America's largest vertically integrated greenhouse vegetable growers, converting co-owned 1.1M sf greenhouse for large-scale cannabis cultivation.
- Acquisition of Agro-Biotech, a Licensed Producer in Saint-Eustache, Québec, with a 75,000 sf facility including 50,000 sf of indoor growing space. The facility will serve the Québec market and enhance expansion into Eastern Canada.
- Signed a Memorandum of Understanding with the British Columbia Liquor Distribution Branch (BCLDB) to supply high-quality cannabis products to the BCLDB to serve the adult-use market throughout the province.
- Planned build out of wholly owned 500,000 sf cultivation and extraction facility in Metro-Vancouver.



### STRATEGIC STEPS TO CREATE PROMINENT INDUSTRY POSITIONING

- The Emerald/Village Farms partnership called Pure Sunfarms, now in commercial production, adds decades of large scale greenhouse growing experience and strategically positions Emerald for rapid production capacity expansion in anticipation of the future legal adult-use market. Targeting production costs below \$1/gram.
- Entered into a 51:49 partnership with San Diego-based Emerald Health Bioceuticals Inc. (EHB) to create Emerald Health Naturals (EHN). Secured exclusive Canadian rights to sell award-winning non-cannabis health products that support the endocannabinoid system through natural health product, grocery, and pharmacy sales channels.
- Market research shows 6 out of 10 cannabis users are also purchasers of natural health products. The introduction of EHN's non-cannabis, non-psychoactive natural health products into the Canadian market provides EHT with a unique opportunity to further establish its brand beyond currently anticipated legal sales channels for therapeutic and recreational cannabis products.
- Acquiring Northern Vine Laboratories, a Licensed Dealer with an R&D facility, allows Emerald to provide analytical testing services, import and export oils and advance product innovation and development plans.



**PRODUCTION SCALABILITY**

- 1.1M sf greenhouse facility that represents one of Canada’s largest single cannabis growing facilities.
- Option on two additional greenhouses with 3.7M sf.

**LOW COST GROWING**

- Decades of large-scale greenhouse growing experience plus extensive cannabis growing expertise in optimally configured facility
- The goal is to produce cannabis at less than \$1/gram

**LOOKING AHEAD**

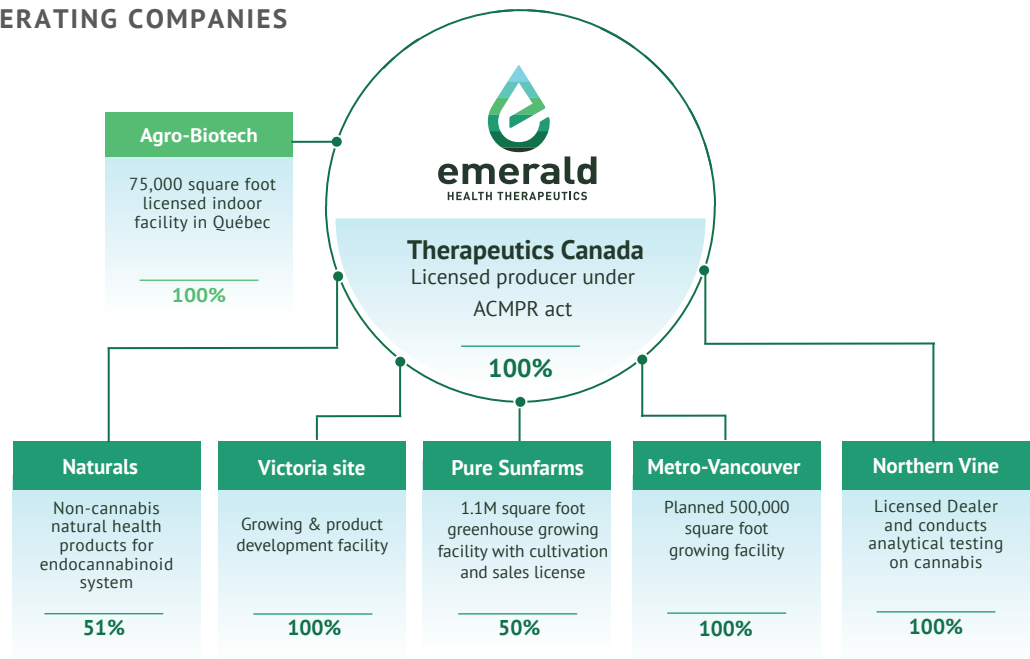
The world’s largest legal market for recreational cannabis

On June 19, 2018, the Canadian government approved the Cannabis Act, legalizing cannabis for recreational adult-use. Wholesales and retail sales will begin on October 17, 2018. Emerald is expanding capacity to meet the demand and growth of the anticipated legal adult-use market.

Legalization makes Canada the world’s largest federally legal market for recreational cannabis, which Deloitte estimates may exceed \$7.2B in 2019.

The Marijuana Policy Group suggested that 25% of users in the medical use market will generate 85% of the demand. In Colorado, where a fully legal market policy is enforced, 38% of medical users consume cannabis near daily compared to adult use which is 16% near daily.

**OPERATING COMPANIES**



**LEADERSHIP**

Emerald is distinguished by an established board of directors and management team with extensive experience in pharmaceutical research, product and intellectual property development, large-scale agriculture, and marketing.

**Executive Chairman, Avtar Dhillon**, is a life science entrepreneur with more than 35 years’ experience building public companies through M&A, establishing dominant IP portfolios, and leading innovative scientific and farming enterprises. As a founder/co-founder or lead investor in dozens of life science companies, he has raised over \$1B in public and private financings. Currently, Dr. Dhillon serves as an active board member and chairman for a number of life science and investment companies, and is Chairman of the Cannabis Canada Council.

**Chief Executive Officer, Chris Wagner**, has more than 25 years’ experience in commercialization and product development in the life sciences industry. As the Global Team Leader at Eli Lilly, Mr. Wagner launched 15 biologic and small molecule products and directed global marketing for several notable brands, including Prozac®, Cialis®, and Zyprexa®, which alone achieved annual sales of over \$4B per year. He has since used his entrepreneurial, marketing and leadership skills to guide Aspreva Pharmaceuticals, Sirius Genomics, and Contextual Genomics from start-up to success.

Emerald’s dynamic team of leaders have decades of experience in clinical research, GMP production practices, quality control, regulatory processes, developing intellectual property, and commercialization of some of the world’s most successful consumer goods on a global scale.

For more information, contact:

INVEST@EMERALDHEALTH.CA

TSXV : EMH | OTCQX : EMHTF

Toll-Free: 1-800-757-3536 IR ext: 5

EMERALDHEALTH.CA